

Dixie District Transportation Newsletter

September 2009
Volume 2, Issue 1

Bus Pass Rates

- ◆ Annual Pass: \$450 (\$1.25 per trip)
- ◆ Semester Pass: \$225
- ◆ Ticket Books: \$50 per 25 tickets (\$2.00 per trip)

Why are School Buses Painted Yellow?

In 1939, delegates to the first National Minimum Standards Conference wanted a uniform color so school buses would be recognized by the same color nationwide. A second consideration was cost since manufacturers charged additional for special colors. Plus, delegates concluded that for safety sake, yellow was easier to see in fog, rain, and other bad weather conditions.

In 1974 the federal government approved Standard 17. In this standard, which has since been revised and is now a highway safety guideline, the federal government suggested that school buses should be painted National School Bus Chrome Yellow. That's when the states started to use yellow on all new buses. At present there is no federal law that requires school buses to be painted yellow. It is up to each state to do so.

Reminder to Parents

SLOW DOWN IN SCHOOL ZONES!

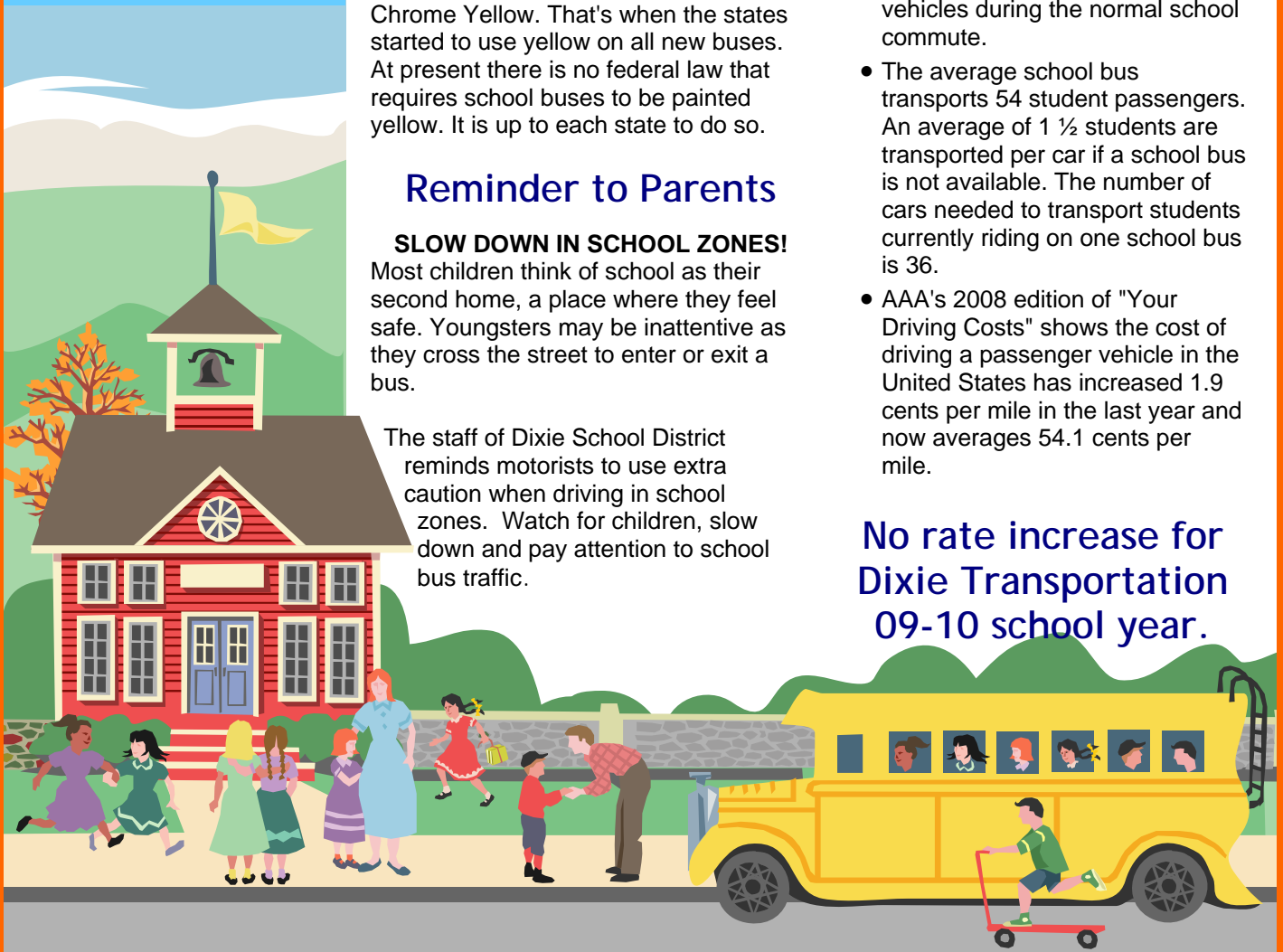
Most children think of school as their second home, a place where they feel safe. Youngsters may be inattentive as they cross the street to enter or exit a bus.

The staff of Dixie School District reminds motorists to use extra caution when driving in school zones. Watch for children, slow down and pay attention to school bus traffic.

Did you know...?

- California school districts have all felt the impact of state budget cuts over the last few years. Historically, state funding for school transportation has been inadequate to cover the costs of providing this service. This has forced school districts to charge fees to students and also to use general fund dollars to offset the funding shortfall. This year both Home to School and Special Education Transportation programs received an additional 20% cut in state funding.
- The federal government considers school buses to be about nine times safer than other passenger vehicles during the normal school commute.
- The average school bus transports 54 student passengers. An average of 1 ½ students are transported per car if a school bus is not available. The number of cars needed to transport students currently riding on one school bus is 36.
- AAA's 2008 edition of "Your Driving Costs" shows the cost of driving a passenger vehicle in the United States has increased 1.9 cents per mile in the last year and now averages 54.1 cents per mile.

No rate increase for Dixie Transportation 09-10 school year.



Environmental and Safety Information

Dixie District School buses use environmentally friendly "Green Diesel Technology". This technology utilizes the benefit of a catalyzed diesel particular filter and ultra-low sulfur fuel cutting gaseous hydrocarbons and particulate emissions by 99% and creating no-smoke, no-smell and near zero emission levels.

School buses manufactured after 4/1/1977 are equipped with more safety equipment than any other vehicle on the road.

Contact Information



transportation@marin.k12.ca.us

Monday - Friday
7 AM – 4 PM
(415) 492-3777

Check out the District's website: dixiesd.marin.k12.ca.us to find information regarding routes, ridership rules and download an application.

Passes may be purchased by mail or at the District Office.

Tickets may be purchased in any of the school offices and at the District Office. Credit Cards are accepted at the District Office only.

Take the Bus Challenge!

1. How much safer is the yellow school bus than mom or dad's car?

- a. 2 times safer
- b. 8 times safer
- c. 13 times safer
- d. 23 times safer

Answer: C – The yellow school bus is the safest mode of transportation for our nation's school children. The school bus is 13 times safer than other non-commercial vehicles, including mom and dad's car. (Source: Transportation Research Board, "The Relative Risks of School Travel," 2002). Of the average 42,000 deaths from traffic accidents every year in the United States, only nine are in school buses (Source: National Highway Traffic Safety Administration/National Center for Statistics & Analysis).

2. How many school buses travel the nation's roads every day?

- a. 10,000
- b. 75,000
- c. 113,000
- d. 470,000

Answer: D – School bus carriers operate the largest mass transportation fleet in the country. Each day, 480,000 yellow school buses travel the nation's roads. Compare that with 131,000 total transit vehicles, 6,300 airplanes and 2,000 passenger rail cars. The school bus fleet is almost three times the size of all other forms of mass transportation combined. (Source: National School Transportation Association)

3. How much cleaner are the exhaust emissions from a school bus built in 2007 compared to one built before 1990?

- a. They are the same
- b. Twice as clean
- c. 10 times as clean
- d. 60 times as clean

Answer: D – 60 times as clean. New technologies and pollution control devices have made new school buses produce only a small fraction of the pollution they generated before 1990. (Source: Environmental Protection Agency.) As older buses are replaced with newer, cleaner-burning ones, they will further reduce our air pollution while improving fuel efficiency. If all 26 million children who ride the school bus each day were driven to school in separate cars instead, thousands of tons of additional pollutants would enter the air each year. School bus manufacturers also are making large investments in new diesel, natural-gas, electric hybrid and other engines to further reduce pollution.

